

LIGHTING QUALITY & HIGH PERFORMANCE

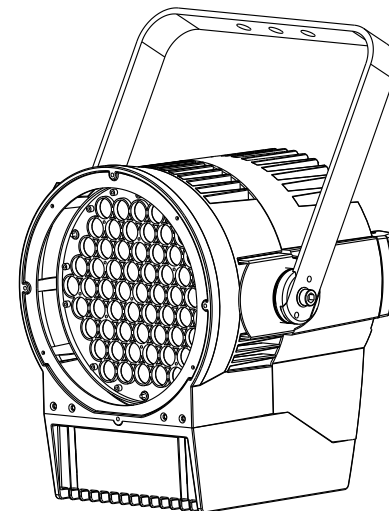
**AMERICAN
PRO**

THANK YOU
FOR CHOOSING
OUR PRODUCTS

USER MANUAL

**AMERICAN
PRO**

www.american-pro.com



SERIES
NEOLED

STUDIOLED
WARM

STUDIOLED
COLD

**AMERICAN
PRO**

1 PRODUCT SPECIFICATIONS

1.1 PRODUCT SPECIFICATIONS

- ◆Voltage:AC100~240V, 50/60Hz
- ◆Max Power:175W
- ◆ Size:375X363X357mm
- ◆ Weight:8.8kg

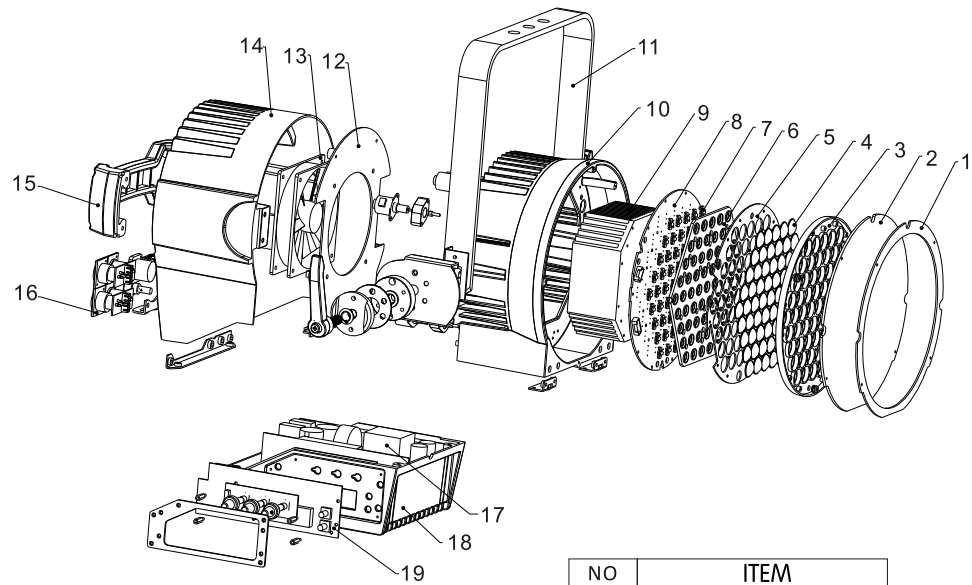
1.2 SAFETY WARNING

IMPORTANT:

- This product must be installed by a qualified professional.
- All maintenance must be carried out by a qualified electrician.
- A minimum distance of 0.5m must be maintained between the equipment and a combustible surface.
- The product must always be operated in a well ventilated area.
- DO NOT stare directly into the LED light source.
- Always disconnect the power before carrying out any maintenance.
- The earth must always be connected to the ground.
- Ensure that all parts of the equipment are kept clean and free of dust.

5 APPENDIX

5.1 MAINTENANCE



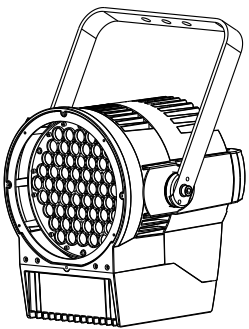
NO	ITEM
1	Dustproof lens lock plate
2	Dustproof lens
3	Plastic lens frame
4	Ø18.8 Zoom lens
5	Lens frame 1
6	Capture lens plastic frame
7	Capture lens
8	LED board
9	Heat sink
10	Head die casting aluminum
11	Handle 2
12	Driver board
13	Fan
14	Base die casting aluminum
15	Handle
16	Adaptor PCB
17	Power Supply
18	PS box die casting aluminum
19	Display PCB

2 INSTALLATION

2.1 MOUNTING

HANGING

The LED fixture can be mounted in a hanging position using the supporting bracket. The bracket should be secured to the mounting truss or structure using a standard mounting clamp. Please note that when hanging the unit a safety cable should also be used.



4 USING A DMX512 CONTROLLER

4.1 CHANNEL ASSIGNMENT

- Note: This product have two DMX512 channel configuration: **【UNO】** / **【STD.W】** / **【STD.P】** / **【DOS】** .

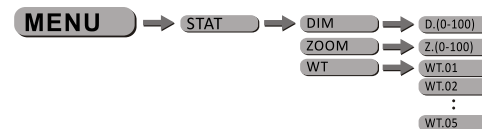
UNO

CHANNEL	VALUE	FUNCTION
1	0 ⇄ 255	MASTER DIMMER

STD.W

CHANNEL	VALUE	FUNCTION
1	0 ⇄ 255	MASTER DIMMER
2	0 ⇄ 255	MASTER DIMMER TRIMMING
3	0 ⇄ 10	NO FUNCTION
	11 ⇄ 50	WHITE MACRO 1:3000K
	51 ⇄ 80	WHITE MACRO 2:3200K
	81 ⇄ 110	WHITE MACRO 3:3400K
	111 ⇄ 140	WHITE MACRO 4:4000K
	141 ⇄ 255	WHITE MACRO 5:4500K
4	0 ⇄ 255	Focus
5	0 ⇄ 200	NO FUNCTION
	201 ⇄ 220	Motor reset
	221 ⇄ 255	NO FUNCTION

3.4 DIMMER (STAT)



- [DIM] to adjust level of intensity
- [ZOOM] to adjust the zoom position
- According to the UP/DOWN key in the DIM menu choice (0-100) numerical, in WT menu choice (1-5) a different color temperature of white light <WT.01> (3000K) 、<WT.02> (3200K) 、<WT.03> (3400K) 、<WT.04> (4000K) 、<WT.05> (4500K) 。

Note: When using this function, if the [MCON] menu is set as [MAST], then the fixture will transfer the [DIM] values to other fixtures. ii) When DMX data is received at the fixture, it will automatically return to main menu after 2 minutes of no key operation.

3.5 RUN MODE



- Enter the **【RUN MODE】** mode to set operation mode.
- **【DMX】** mode is for using the DMX512 controller to control the fixtures.
- **【SLAVE】** mode is for Master -- Slave operation.

3.6 DMX ADDRESS



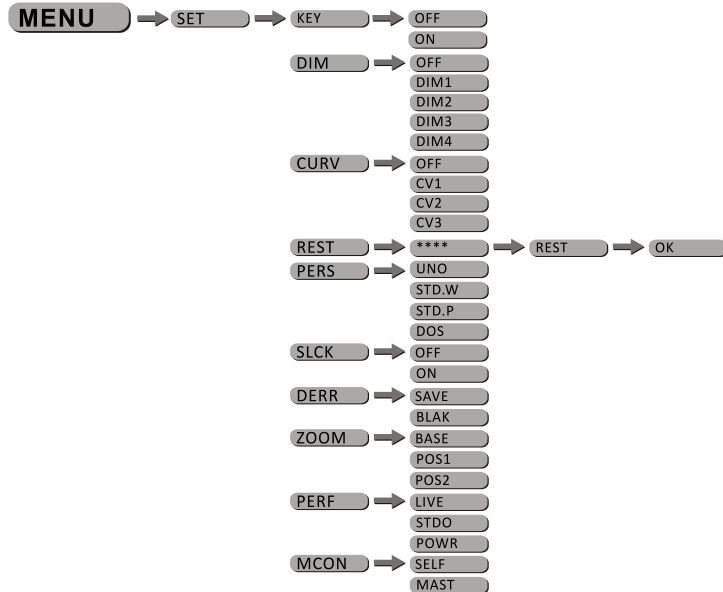
- Enter the **【ADDR】** mode to set the DMX ADDR.

3.7 Motor reset(MOTR)



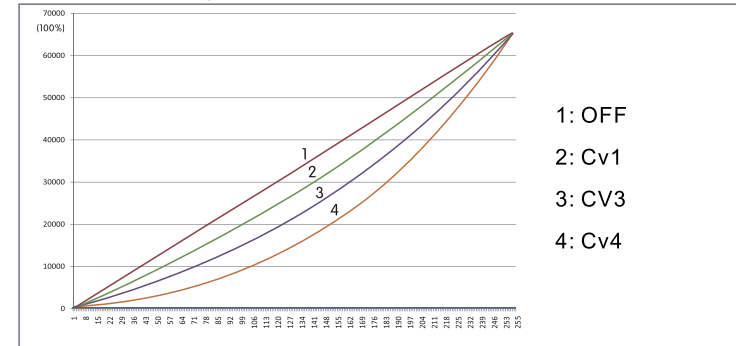
- Press ENTER to enter < MOTR >
- Press UP/DOWN and select <YES> or <NO>
- When you select < YES > and press ENTER, the motor will be reset to origin
- When you select <NO>, and press ENTER, no control.

3.8 SPECIAL SETTINGS

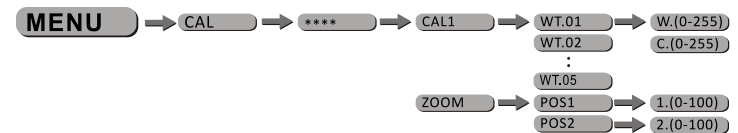


- [SET]...this menu allows the user to adjust key operation settings for this fixture.
[KEY]...select [ON] for automatic lock-out. Password to re-enter the display is <UP> + <DOWN> + <UP> + <DOWN>.
- Select [DIM1], [DIM2], [DIM3] or [DIM4] for different dimming speeds. ([DIM4] is the slowest dimming speed)
- [CURV] allows the user to adjust the shape of the dimming curve. See the CURV chart to Understand more about actual dimming curves.
- In order to reset custom modes to default values select [REST] .
- [PERS]...this setting allows the user to select the DMX personality of the fixture. Refer to DMX personality charts for specific details.
- [SLCK] is used to lock the settings menu. When [SLCK] is set to [ON] then user must insert passcode (UP+DOWN+UP+DOWN) in order to access the settings menu.
- [DERR] Choose[Save] in order to save the last DMX data in case of DMX signal error.
Choose[Black] in order to blackout in case of DMX signal error.
- <ZOOM> is for setting zoom, press UP/DOWN to select. <BASE> is standard setting;
<POS1> is zoom setting 1; <POS2> is zoom setting 2. Press MENU to get back, and the Setting is saved automatically.
- [PERF] this setting allows the user to select the performance characteristics of the fixture.
- [MCON]...this function allows the user to select whether the fixture will send DMX data to other fixtures during stand-alone operation. The [MAST] setting allows data to be sent to Other fixtures. The [SELF] setting is default and will not send DMX data to other fixtures.

CURV dimming



3.9 WHITES CALIBRATION(CAL)



- Enter the [CAL1] to select white color of different color temperature.
- There are 5 pre-programmed White colors can be edited by using [Warm white] & [Cool white] .
- Select the [ZOOM] range. [POS1] & [POS2] set the small position for the zoom function. Note that when using DMX to control the fixture, the user will only be able to access up to the set ZOOM position. It is not possible to adjust beyond the set position.

3.10 CONTROL KNOB

- DIMMER
- ZOOM

Notes:

- In any status, press the adjusting button (any one) twice in 2 seconds, the fixture will be in STAT mode, and will enter respective sub-menu;
- Turn WHITE button, <WT.01-05> appears on the menu